

# HIRE OUR SPACE



LONDON BUBBLE

# Contents

<b>Where Are We? .....</b>	<b>02</b>
<b>Hirers Eligibility .....</b>	<b>03</b>
<b>When Can I Hire? .....</b>	<b>03</b>
<b>Spaces Available .....</b>	<b>04</b>
<b>Rehearsal Room .....</b>	<b>05</b>
<b>Studio .....</b>	<b>06</b>
<b>Meeting Room .....</b>	<b>07</b>
<b>Hot Desks .....</b>	<b>08</b>
<b>Workshop .....</b>	<b>09</b>
<b>FAQs .....</b>	<b>10</b>

# Where are we?



We are located in Rotherhithe, South East London: **3-5 Elephant Lane, London, SE16 4JD**

## **PARKING:**

Onsite unrestricted parking is limited however we have parking space available for people with additional access needs. Please speak to us directly should you want to reserve a parking spot in advance of your visit.

## **PUBLIC TRANSPORT:**

**Buses** - 381, 188, 47, C10, P12

**Tube** - Overground and Underground stations closest to us are Rotherhithe, Surrey Quays, Canada Water (DLR & Jubilee Line) and Bermondsey (Jubilee Line) station.

## **BICYCLES/SCOOTER:**

We have a small foyer space for bikes and electric scooters to be locked safely.

# Hire's eligibility

Our spaces **CAN** be used for:

- Rehearsal space
- Audition space
- Photography sessions
- Resistant materials workshops
- Textiles workshops
- Conference meetings
- Private working
- Other arts shows/workshops e.g. dance, theatre shows, choirs

Unfortunately our spaces **CANNOT** be used for:

- Faith groups
- Political parties
- Party bookings

## When can I hire?

You can hire our rooms **Monday to Friday, 9am - 11pm.**

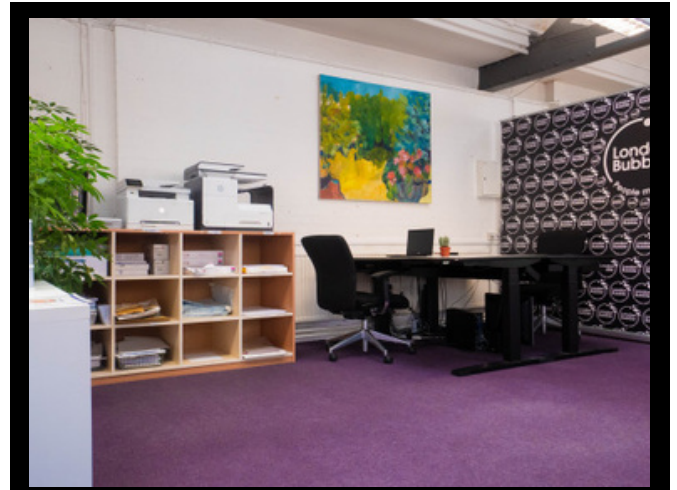
Please be aware that our working hours are Monday - Friday, 10am - 6pm and we may not be in the office to assist you coming in and out of the building.

There is a key safe outside the building where you can access a set of keys. You will be emailed our '**Hire's Building Access Guide**' with unlocking instructions once your booking has been confirmed.

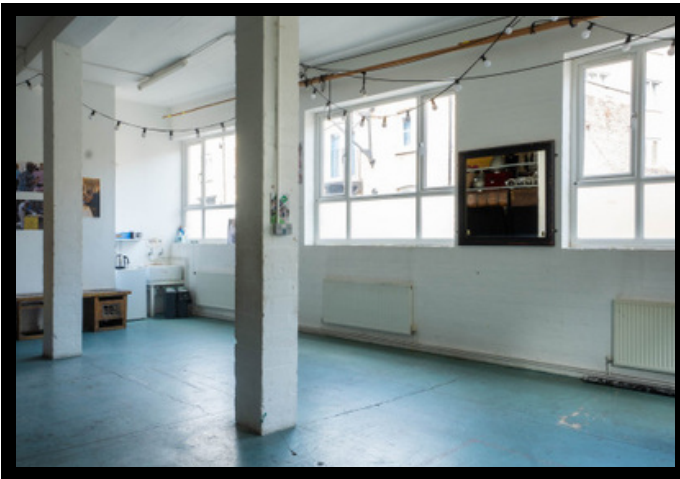
# Spaces for Hire



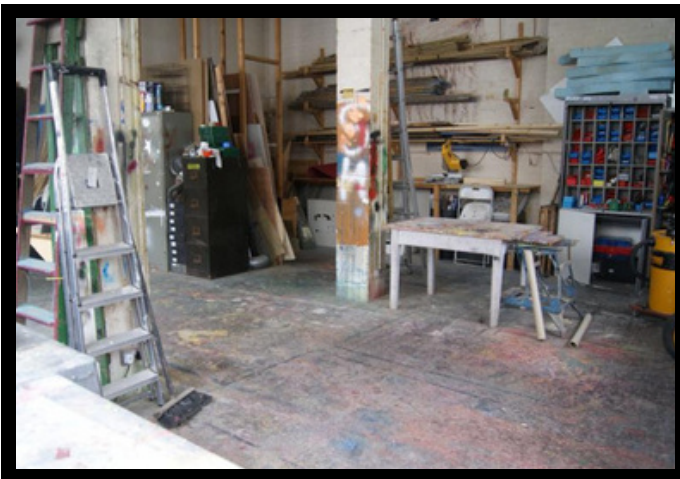
Rehearsal Room



Hot Desks



Studio



Workshop



Meeting Room

To book or make an enquiry: 020 7237 4434 or email [admin@londonbubble.org.uk](mailto:admin@londonbubble.org.uk)

# Rehearsal Room



Our Rehearsal Room is an 11.54m x 8.4m naturally bright room with high, beamed ceilings situated on the first floor. This distraction-free zone has ample space for movement and is ideal for larger scale rehearsals, meetings or auditions. It has marmloeum flooring and features a partial mirror against a curtained wall, small kitchen zone, PA system , chairs and a tuned piano.

This space has a capacity of up to 30 people for practical use and up to 40 people for seated meetings and presentations.

## Commercial Companies:

- £1048 per week (5 consecutive days)
- £241 per full day (8hrs)
- £144 per half day (4hrs)
- £43 per hour

## Charities/Non-Profit:

- £761 per week (5 consecutive days)
- £180 per full day (8hrs)
- £102 per half day (4hrs)
- £32 per hour



*Charges are exclusive of VAT*

To book or make an enquiry: 020 7237 4434 or email [admin@londonbubble.org.uk](mailto:admin@londonbubble.org.uk)



# Studio



Our colourful and comfy ground floor Studio is customizable for artistic expression. It's 9.9m x 5.8m concrete room is fully equipped with it's own kitchenette, PA system, piano, chairs and tables. The Studio offers ample natural light, making it ideal for hosting photo and video shoots.

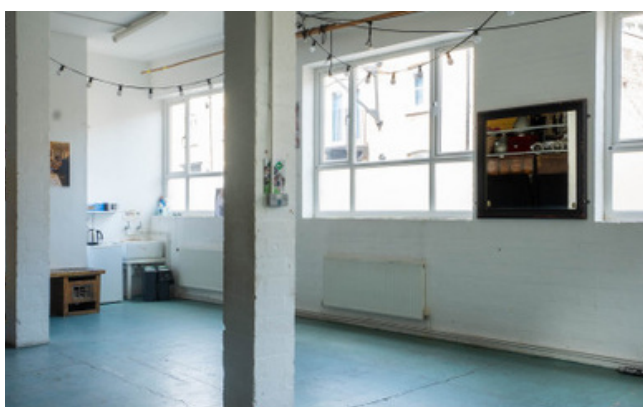
This space is recommended for photo/video shoots, practical workshops, small scale rehearsals and casting calls.

## Commercial Companies Cost:

- £634 per week (5 consecutive days)
- £143 per full day (8hrs)
- £105 per half day (4 hours)
- £35 per hour

## Charities/Non-Profit Cost:

- £449 per week (5 consecutive days)
- £102 per full day (8hrs)
- £68 per half day (4 hours)
- £22 per hour



*Charges are exclusive of VAT*

To book or make an enquiry: 020 7237 4434 or email [admin@londonbubble.org.uk](mailto:admin@londonbubble.org.uk)



# Workshop



The Shed is a 10.5m X 6.6m crafty workshop space with double door access for technical artisans and DIY enthusiasts. It's a functional and inspiring environment equipped with professional tools and secure storage space.

Located on the ground floor, its benches and floor space is set for building and there are 4 large pillars that need to be worked around. There are various power tools available for use including a compressor.

This space is ideal for artists, small project builders and seamsters.

## Hire Charges

- £20 per hour

*TB: The Workshop is unavailable on Thursdays*



*Charges are exclusive of VAT*

To book or make an enquiry: 020 7237 4434 or email [admin@londonbubble.org.uk](mailto:admin@londonbubble.org.uk)





# Meeting Room



Our cozy ground floor meeting room and its flexible layout offers comfortable seating for a variety of meeting styles. The room is clean, quiet and bright for a professional working environment and includes a fitted piano.

It can be used for brainstorming, business and committee meetings and is also fit for small group workshops. It has a capacity of up to 6 people.

### Commercial Companies Cost:

- £139 per full day (8 hours)
- £103 per half day (4 hours)
- £32 per hour

### Charities/Non-Profit Cost:

- £92 per full day (8 hours)
- £57 per half day (4 hours)
- £19 per hour



*Charges are exclusive of VAT*

To book or make an enquiry: 020 7237 4434 or email [admin@londonbubble.org.uk](mailto:admin@londonbubble.org.uk)



# Hot Desks



Elevate your workday with our hot desks in our welcoming, ventilated and fully equipped office, perfect for private and co-working hire. You'll have the

flexibility of choosing your spot daily, with convertible standing desks, high-speed Wi-Fi and access to our well-equipped kitchen space for coffee breaks and networking opportunities.

This desk space is ideal for remote workers or small teams looking for an innovative, supportive and productive working environment.

## Hire Charges:

- £15 per day

*TB: Hot Desks are only available during our office opening hours Monday - Friday, 10am-6pm.*



*Charges are exclusive of VAT*

To book or make an enquiry: 020 7237 4434 or email [admin@londonbubble.org.uk](mailto:admin@londonbubble.org.uk)



# FAQ's

## **ARE ALL THE ROOMS ACCESSIBLE?**

Yes, all of our rooms are accessible. There is a platform lift to the first floor and we have two accessible toilets - one opposite the accessible lift, the other outside the Rehearsal Room.

## **ARE THERE KITCHEN FACILITIES?**

Yes, the Rehearsal Room, Studio and Office (Hot Desks) have kitchen facilities including a fridge, freezer, sink, microwave and plug-in electrical stove. TB: We provide tea and coffee facilities but not milk!

## **IS THERE WIFI?**

Of course! The password will be in the Building Access Guide, alongside info on how to access and leave the building - emailed to you after booking has been confirmed.

## **WHAT ABOUT CLEANING?**

We have a cleaner who comes in once a week however we do rely on everyone to pull their weight to keep our space clean and tidy. Please leave the room as you would expect to find it.

## **IS THERE A PRINTER?**

Yes, there are two printers in the Office (Hot Desks). During office hours we can provide A4 print upon request. We charge 15p per single-sided A4 black and white and 30p per single-sided colour.

## **CAN I LEAVE THINGS OVERNIGHT?**

Yes, for a small fee and not in the office with us. You may leave props and small set items in your booked room. We just ask you to leave the space suitable for our groups to work comfortably and we'll ask them to do the same for you.